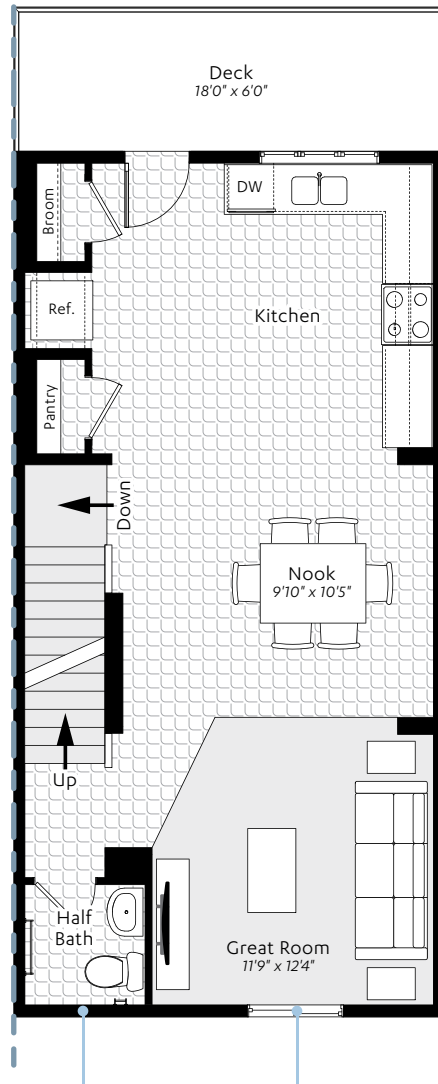


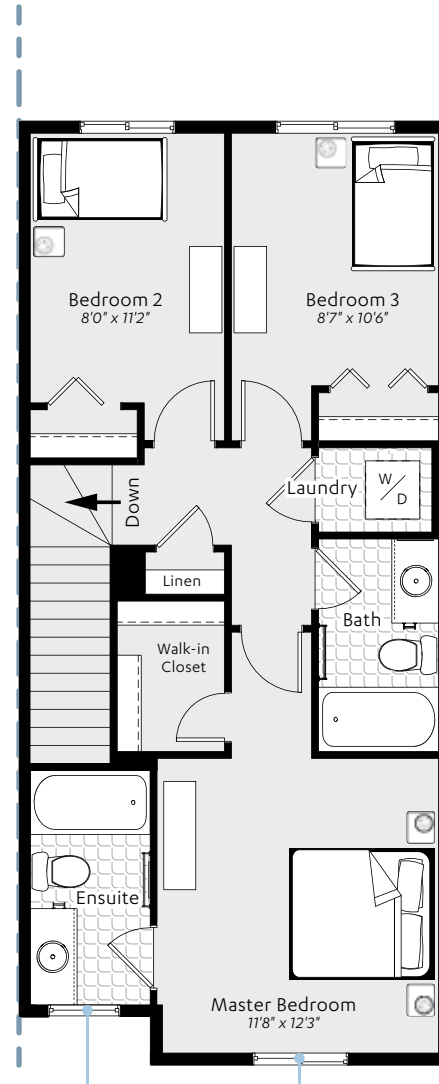
Window availability and formation dependent to home location; please refer to elevation sheet for details.

**GROUND FLOOR** | 73 sq. ft.



Window availability and formation dependent to home location; please refer to elevation sheet for details.

**MAIN FLOOR** | 648 sq. ft.



Window availability and formation dependent to home location; please refer to elevation sheet for details.

**UPPER FLOOR** | 695 sq. ft.



**EXCEL HOMES**  
**QUINTON**  
*in Sunset Ridge*

UNDER DRIVE TOWNHOME  
 THREE STOREY

BATHROOMS  
 2.5

BEDROOMS  
 3

FINISHED SQ. FT.  
 1416

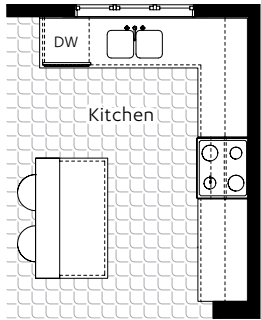
**EXCEL HOMES**

excelhomes.ca

OVER 50 AWARDS FOR  
 DESIGN EXCELLENCE

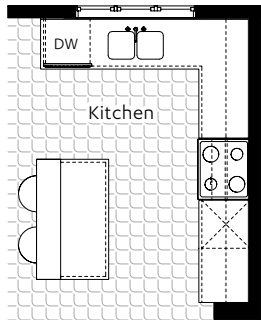


- A1 Kitchen Upgrade:**
- Includes crown moulding
  - 3'0" x 5'0" island in centre of kitchen (includes additional light above island)



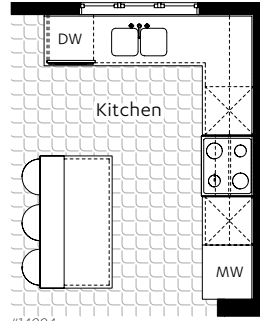
#14001

- A2 Kitchen Upgrade Level 1:**
- Includes crown moulding
  - 3'0" x 5'0" island in centre of kitchen (includes additional light above island)
  - Cabinet upgrade to max 42" upper cabinets with step up above microwave and fridge
  - One set of pots and pans drawers beside stove



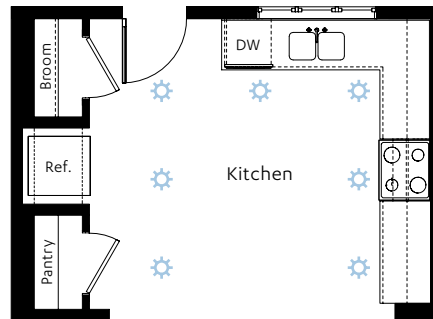
#14003

- A3 Kitchen Upgrade Level 2:**
- Includes crown moulding
  - 3'0" x 5'6" island in centre of kitchen (includes additional light above island)
  - Cabinet upgrade to max 42" upper cabinets with finished height consistent throughout kitchen
  - Chimney-style hoodfan included with full height tile behind
  - Two sets of pots and pans drawers beside stove
  - Built-in microwave included with trim kit



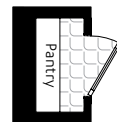
#14004

- A4 Pot Light Kitchen Layout:**
- 6" LED pot lights including dimmer switch



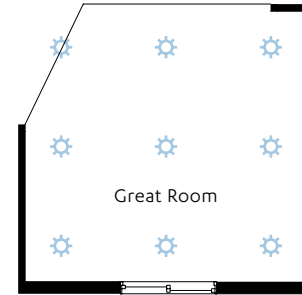
NOTE: Actual number and location of pot lights may vary based on site conditions.  
#50101

- A5 French Doors to Pantry**



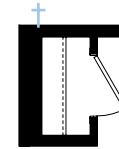
#21450+

- B1 Pot Light Great Room Layout:**
- 6" LED pot lights including dimmer switch



NOTE: Actual number and location of pot lights may vary based on site conditions.  
#50201

- C1 Gas Line for BBQ**

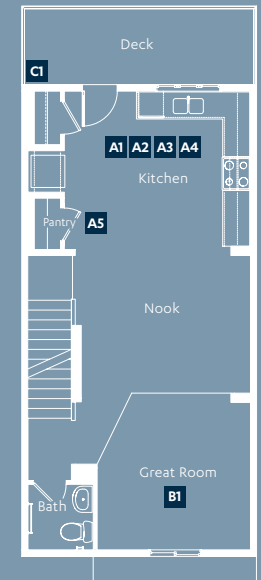


**EXCEL HOMES**  
**QUINTON**  
*in Sunset Ridge*

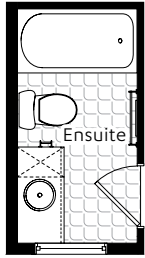
**MAIN FLOOR**  
**OPTIONS**

KITCHEN, PANTRY,  
GREAT ROOM + REAR

OPTION LOCATION  
OVERVIEW

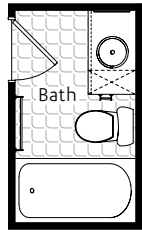


**D1** Bank of Drawers to Ensuite



#16017

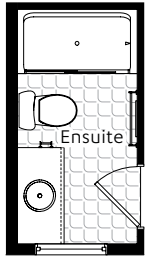
**E1** Bank of Drawers to Main Bath



#16303

**D2** Shower to Ensuite in Lieu of Tub:

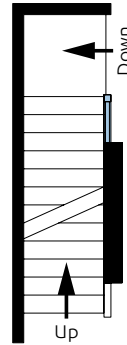
- Tub changed to 36" x 60" full acrylic shower with clear glass shower door, standard sliders and chrome frame



#16018

**F1** Railing to Ground Level:

- Railing added on main floor landing leading down to ground level



Main Floor View  
#72181+

**EXCEL HOMES**  
**QUINTON**  
*in Sunset Ridge*

**UPPER FLOOR  
OPTIONS**

ENSUITE + BATH

**RAILING OPTIONS**

OPTION LOCATION  
OVERVIEW

